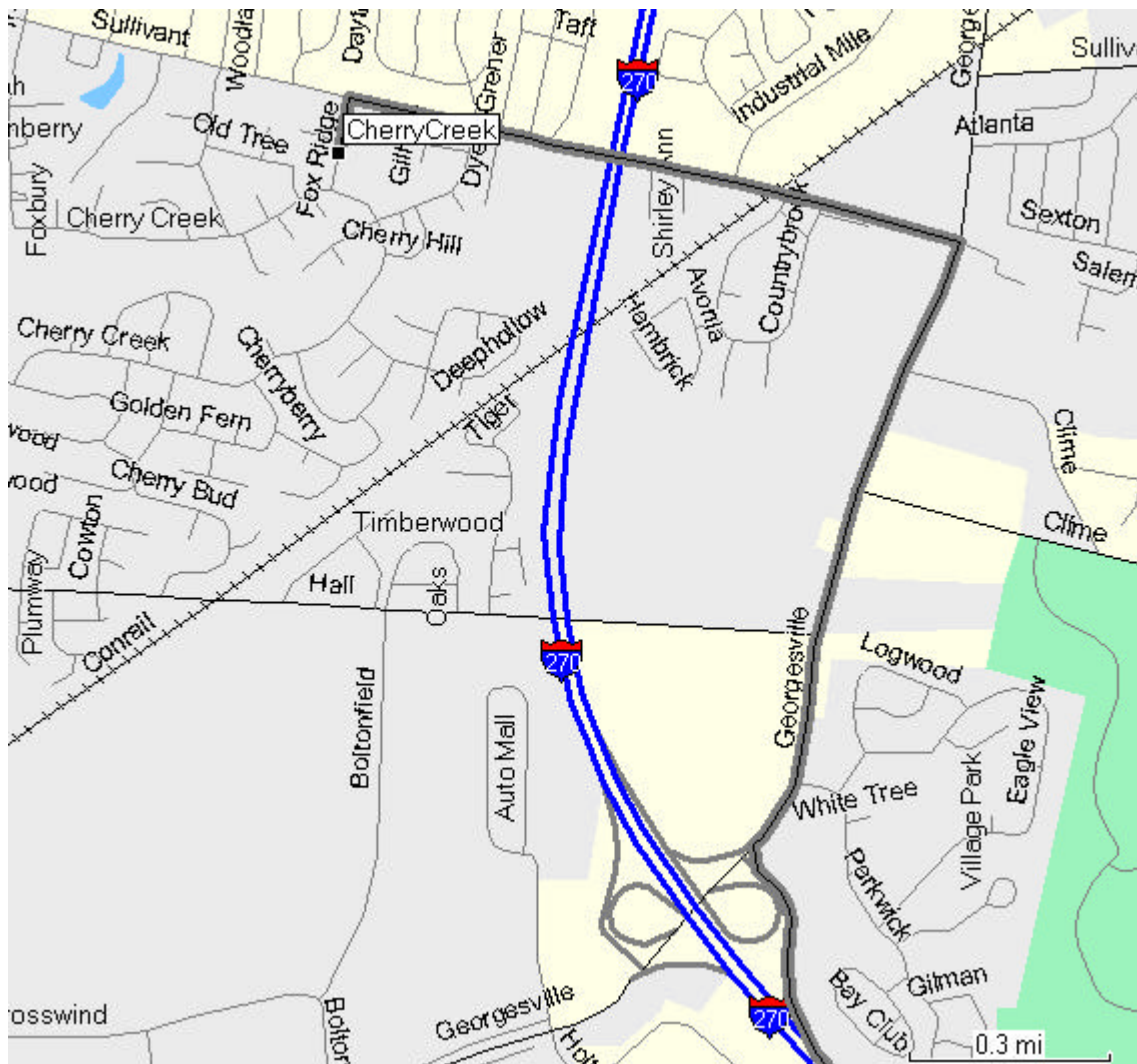


Directions to Cherry Creek from the South



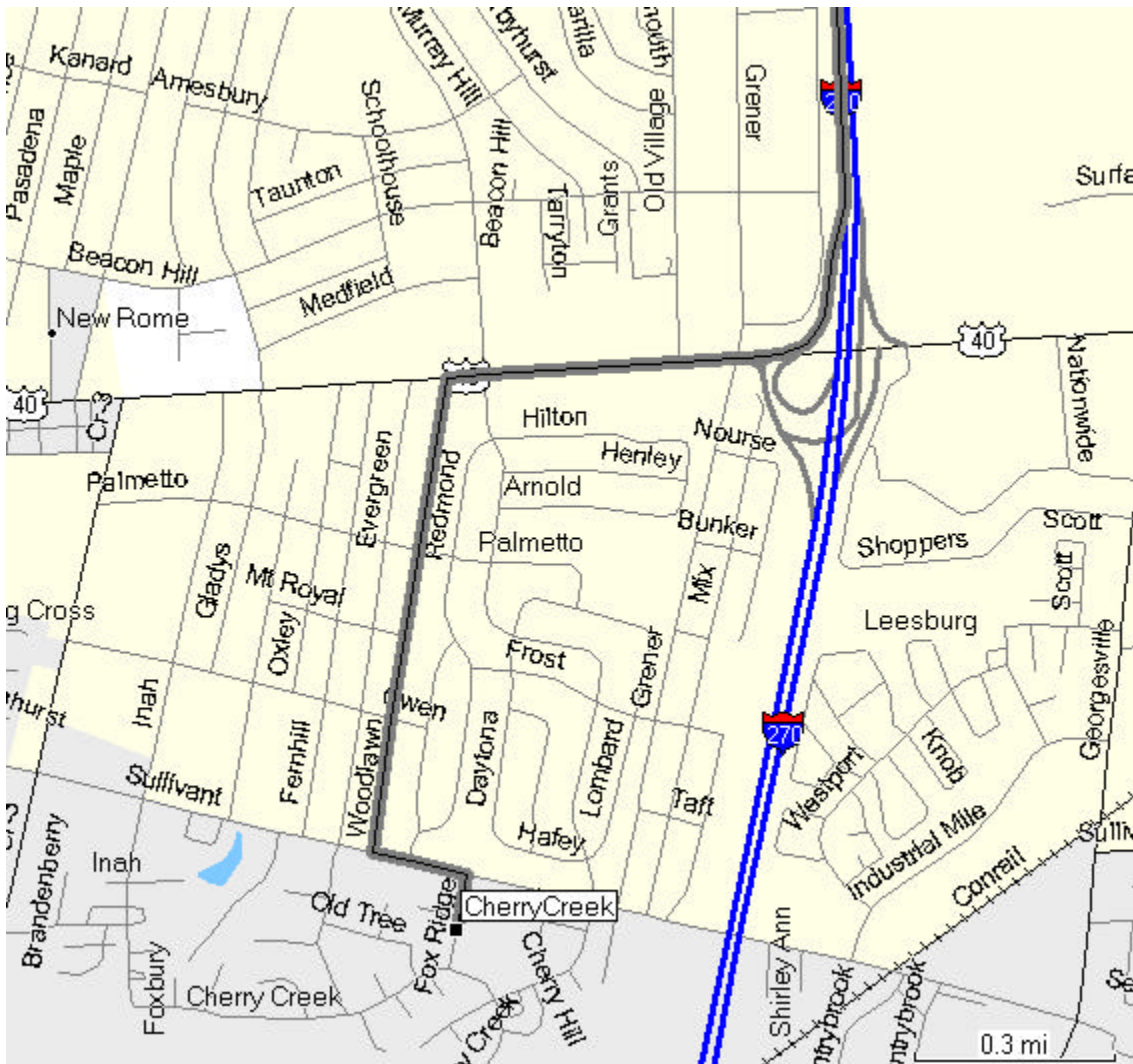
Take Interstate 270 to Exit 5 – Georgesville Road. At the end of the exit ramp, turn right onto Georgesville Road (to the North).

Approximately 1 mile on Georgesville will be Sullivant Avenue. Turn left on Sullivant Avenue.

Approximately 0.9 mile on Sullivant Avenue you will come to Fox Ridge St on the left. Turn left on Fox Ridge St. The Cherry Creek Facility is about 500 feet ahead.

Phone: (614) 878-7260

Directions to Cherry Creek from the North



From Interstate 270, take exit 7B onto Broad Street (Route 40), heading West.

Travel on Broad Street approximately three-quarters of a mile to Woodlawn Avenue.
Turn left on Woodlawn Avenue.

Travel on Woodlawn Avenue approximately three-quarters of a mile to end at Sullivant Avenue. Turn left on Sullivant Avenue.

Travel approximately 750 feet on Sullivant to Fox Ridge St. Turn right on Fox Ridge St.
The Cherry Creek Facility is about 500 feet ahead.

Phone: (614) 878-7260