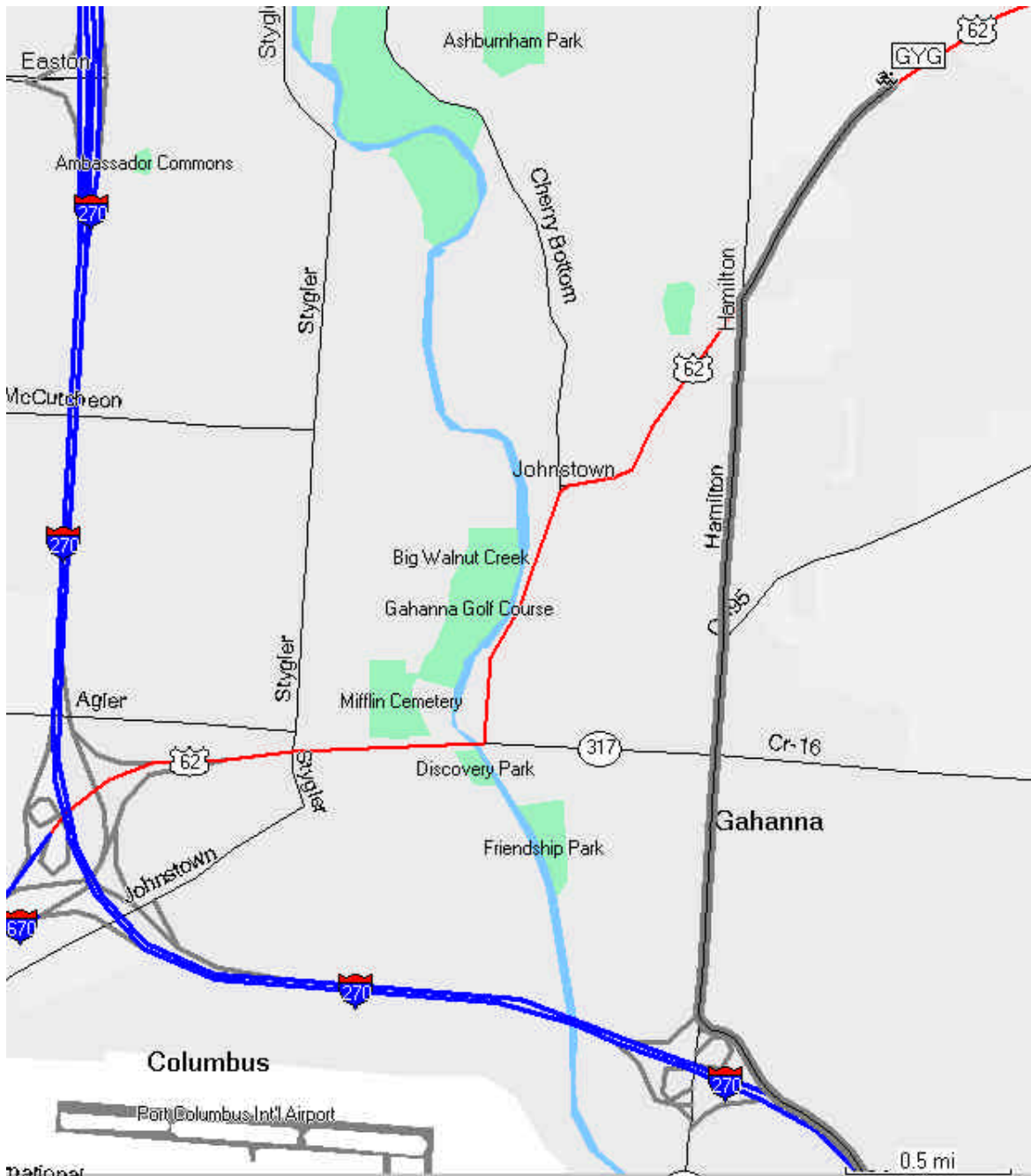


Directions to the Gahanna YMCA (from South / East)



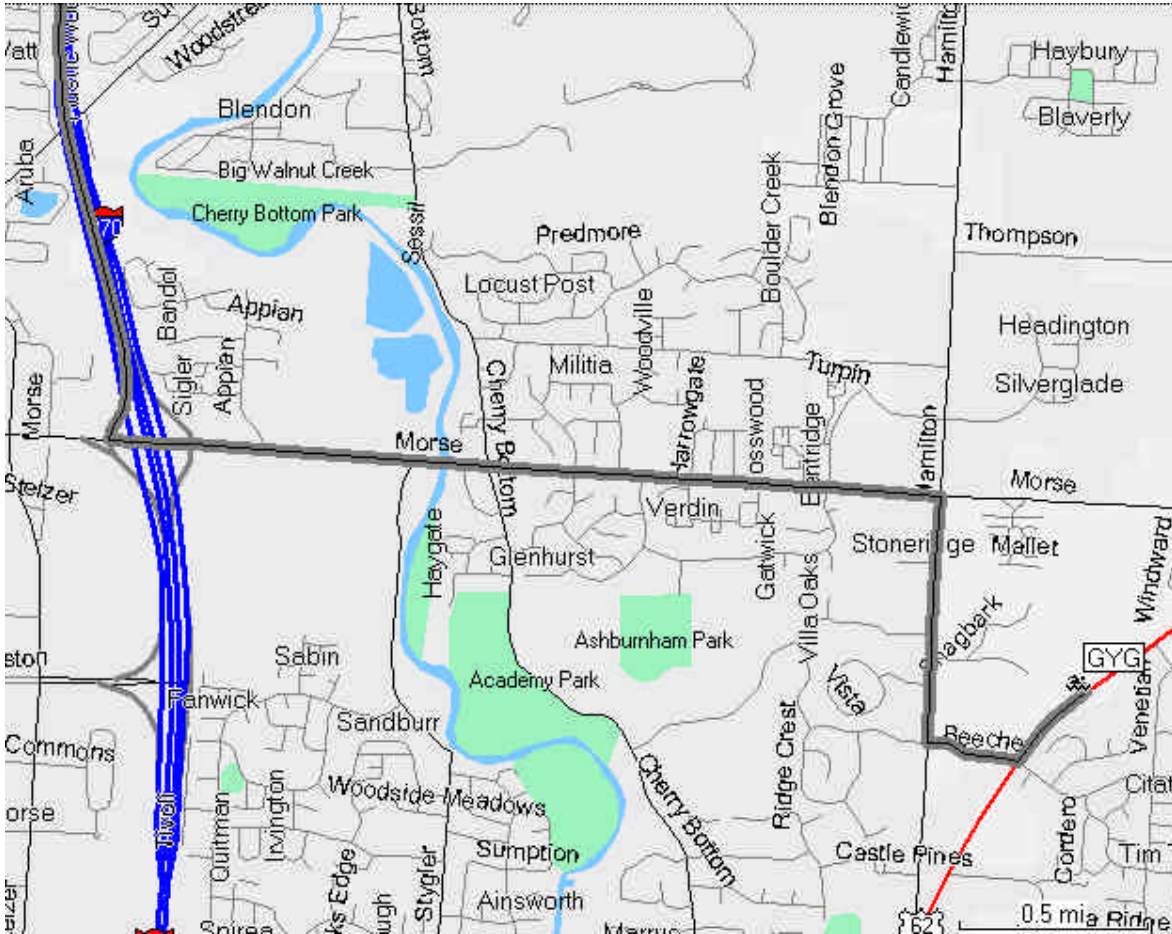
From Interstate 270 North. At Exit 37 / Hamilton Road, exit to the right.

Once on the ramp, bear to the right to head North on Hamilton Road. Stay North on Hamilton road for 2.2 miles. You will come to a traffic light that allows you to bear right on Route 62 in a Northeasterly direction.

Once on Route 62, you will travel through two traffic lights a distance of 0.8 mile and you will find the YMCA on the left.

Gahanna YMCA; 555 YMCA Place, Gahanna, OH 43230 614-416-9622

Directions to the Gahanna YMCA (from North)



Exit to the right off of I-270 at exit 32 for Morse Road. At the bottom of the ramp, turn left onto Morse Road.

Travel East on Morse Road for 2.2 miles to Hamilton Road (Shell station on the right). Turn right (South) on Hamilton Road.

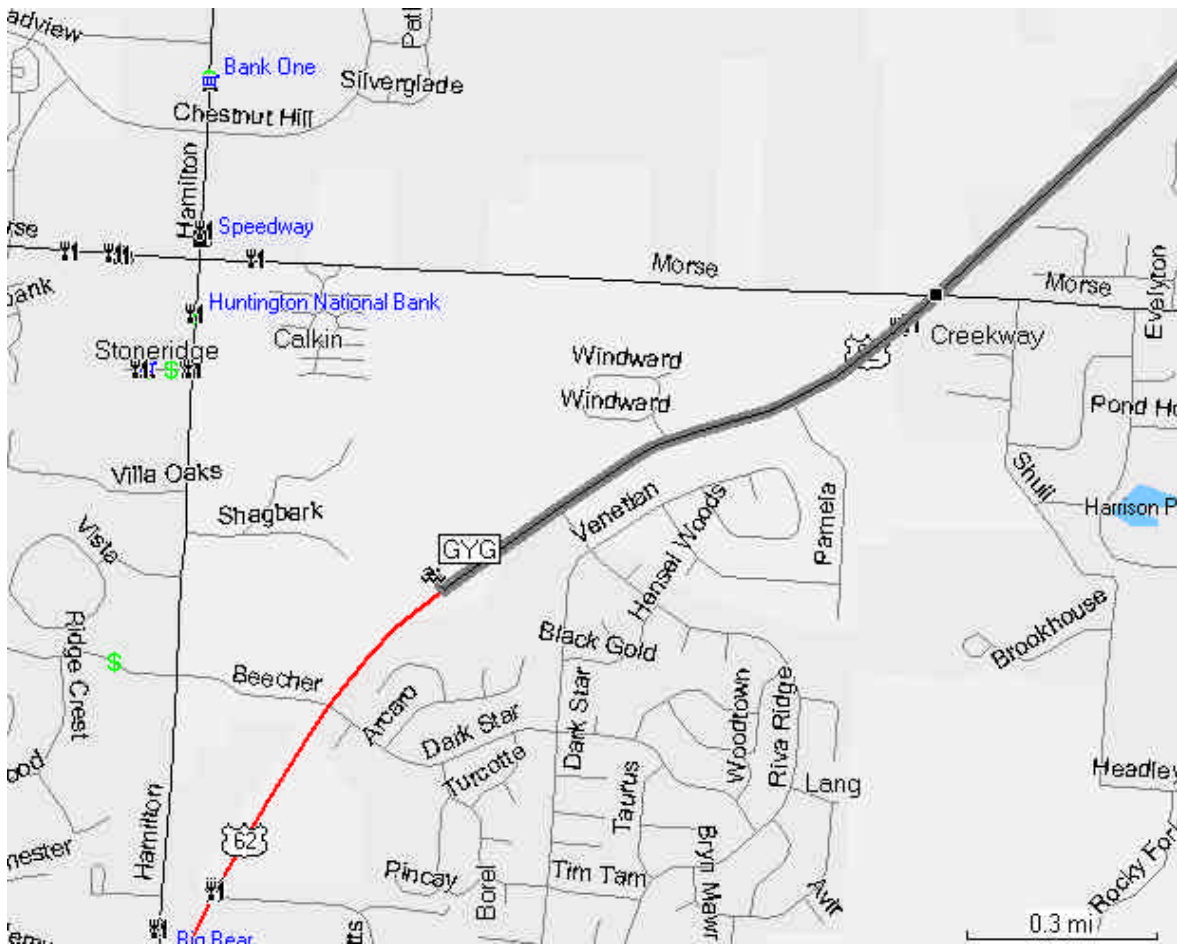
There is a traffic light at Beecher Road (0.6 miles). Take a left onto Beecher Road, heading East.

At the next traffic light, you will be at Route 62. Turn left (Northeast) on Route 62.

The YMCA is $\frac{1}{4}$ mile ahead on the left.

Gahanna YMCA
555 YMCA Place
Gahanna, OH 43230
614-416-9622

Directions to the Gahanna YMCA (from Northeast)



Take State Route 62 to the Southeast.

Once you cross Morse Road, the YMCA is just under 1 mile further, on your right.